



Standard Features	Options
/ High efficiency AC driving motor	/ Side way battery change
/ Special for truck's lifting motor	/ Big capacity Chinese made battery
/ Multi-functions dashboard	/ Cold store application
/ Full electronic controlled travelling, lifting and steering	/ High performance import battery
/ Front lighting system, turning indicator, LED combined three colors's rear lights	/ Battery charger
/ Big dimension rubber pad	/ Rear lighting system
/ Sheet metal stamping made front and rear bottom plate	/ Front dual tyre
/ Sheet metal stamping made left and right cover and battery cover	/ SE tyre
/ Reversing beeper	/ Non-marking tyre
/ Full hydraulic steering	/ Left and right rear view mirror
/ Storage box	/ Reversing hand grip with horn button
/ Soft landing system	/ Wide fork carriage
/ Standard forks in red	/ Wide or higher load backrest
/ 3m duplex wide view mast	/ Other dimension forks
/ Tow coupling	/ Duplex mast with full free lift
/ Center located rear view mirror	/ Triplex mast
/ Suspension seat with higher OHG	/ Integrated side shift
/ Turning speed is automatically reduced when steering for Model 2.0~3.5t	/ Other attachments
/ The cover below control panel are fully closed	/ OPS
/ Dashboard is relocated to overhead, no restriction of the operator's visibility	/ Blue spot light
/ EPB: Electronic Parking Brake	/ Other specification on demand



ZHEJIANG HANGCHA IMP. & EXP. CO., LTD.

Factory site: 666 Xiangfu Road, Hangzhou, Zhejiang, China (311305)

Tel: +86-571-88926735 88926755
Fax: +86-571-88926789 88132890

sales@hcforklift.com
www.hcforklift.com



HANGCHA GROUP CO., LTD. reserves the right to make any changes without notice concerning colors, equipment, or specifications detailed in this brochure, or to discontinue individual models. The colors of trucks, delivered may differ slightly from those in brochures.

A Series Electric Forklift Truck

with capacities of 1,000 to 3,500kg

The World of Hangcha



2021 VERSION 1/COPYRIGHT 2021/04

LET THE LIUM POWER FREED



HANGCHA provides Li-Ion battery (LiFePO4) with 5 years or 10000 hours warranty.

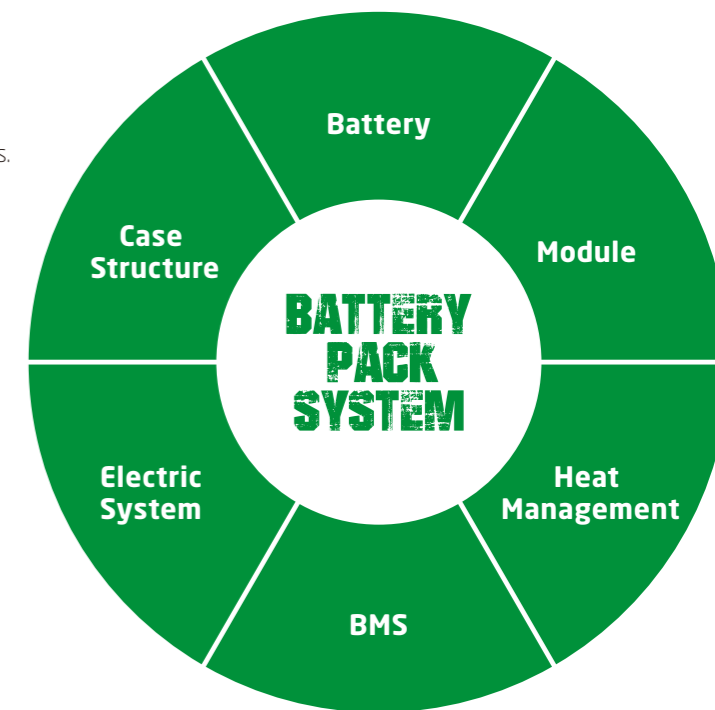


5 YEARS WARRANTY

INNOVATIVE SOLUTIONS NEW POWER NOW

Innovative, reliable lithium-ion technology (Lithium Iron-Phosphate), which are developed jointly by HANGCHA and CATL. Battery cells and modules are from CATL, with reliable quality, exclusively for HANGCHA.

- / We use square lithium iron phosphate batteries and modules used in large quantities by commercial vehicles in mature economies.
- / The module uses an aluminum alloy frame which is sturdy, lightweight and with excellent heat dissipation.
- / Safe and effective: Charging efficiency as high as 98%, thermal runaway temperature 600 °C or above.
- / Adapted to low temperatures: Comes standard with an electrical heating feature, ensuring normal operation in low temperatures.
- / Quick charging: Can charge and operate at the same time, fully charged in 2 hours.
- / Long-working: 4000 charging cycles, capacity retention greater than 80%.
- / Maintenance-free: Battery does not require manual maintenance.
- / Green and clean: Pollution-free, zero emissions.



Li-Ion
2 hours
100%

Lead-acid batteries
8-10 hours 100%

Rapid charging and opportunity charging ensure continuous availability of vehicles

Li-Ion powered forklifts are always available. They allow for fast full charging or boost charging (100 % charge in 2 hours). They are maintenance free and do not require a battery change when used for multi-shift operations.



TITANS CHARGER

Li-Ion Battery Pack specification

Type		CPD10-AC4-EI	CPD15-AC4-EI	CPD18-AC4-EI	CPD20-AC4-EI	CPD25-AC4-EI	CPD25-ALC4-EI	CPD30-AC4-EI	CPD35-AC4-EI
Battery voltage, capacity	V/Ah	80/202	80/202	80/202	80/271	80/271	80/404	80/404	80/404
Titans charger		SLC-80100	SLC-80100	SLC-80100	SLC-80100	SLC-80100	SLC-80200	SLC-80200	SLC-80200

Appearance

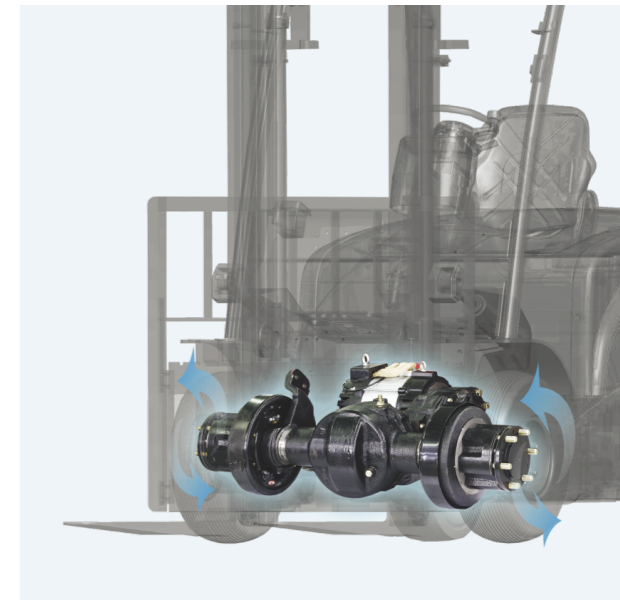
Applied advanced new designing method, world famous designing company designed, make the eye catchable stream outline of the truck chassis. Small dimension, simple appearance, and metal material applied for the exposed parts, all provide robust construction of the A series.

Power Train



Stability

Advanced parallel layout of drive motor and lower located battery up to chassis bottom provide good stability to the truck.



Intelligent

- / First-class R&D and testing facility.
- / First-class production quality management system.
- / First-class manufacturing facility.
- / First-class environment and control.



Comfortable Operation

Ergonomic

Easy to see dashboard is relocated to overhead, no restriction of the operator's visibility. The operator can monitor the truck operation at a glance.



Seat

The extra foot space is provided to reduce operator fatigue significantly. The new wide-open, non-slip step makes getting in and out easy and safe.

Soft landing

In addition to the soft landing system, the soft lifting system is adopted (front lifting cylinders of triplex mast and full free dup-lex mast), as a result, the noise and shock of the mast significantly decreases.



EPB

Electronic Parking Brake, it provides the safe and rapid brake performance. More particularly, turn on the function automatically under different working situation.

Advanced

High frequency MOSFET controller provides accurate control of travelling, lifting, and better adjustable performance, and better matches the motor. Regenerative braking, reverse current braking and anti-slide on slope function guarantee the operation safety.

Multi functions big LED dashboard provides running hours, battery power, and self diagnosis functions, and with high accuracy even in bad environment.

Regenerative braking is more energy saving and efficiency during truck's deceleration, direction changing, and driving on downwards slope.

C3/C4 system



CURTIS big LED dashboard. Non-handset Operation

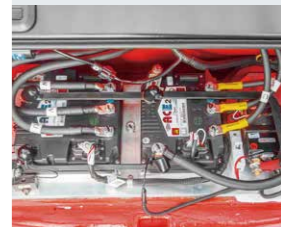


Imported high performance, and new generation AC controller

Z3/Z4 system



HANGCHA dashboard



ZAPI controller

1. Low center of gravity provides good turning stability, and better operator's driving comfort. 150mm adjustable distance of seat provides better operator's comfort of different operators.
2. Soft landing system is applied for A series. When the forks lower to 60-100mm to ground, the soft landing system is auto operated, and to avoid the forks dashing against the ground. New designed broad view mast provides better forward visibility.
3. Easy to see LED dashboard provides friendly interaction.
4. Low noise, no exhaust emission, and low energy consumption, all meet environment friendly requirement.

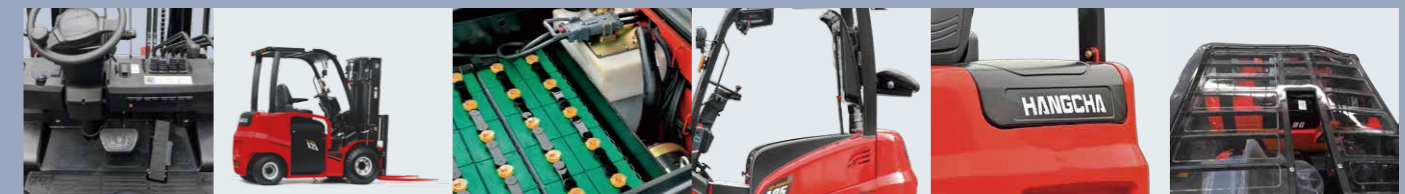


Service Ability

Full open battery cover, easy for battery service easy opened counter weight cover, to protect internal controller to avoid water and dust World famous brand electronics are applied in motor controller, contactor, power plug, emergency switch, dashboard, and accelerators.

Overloaded protection system is applied for electronics and hydraulics.

CE certificate is available.



The cover below control panel are fully closed

Side battery changing solution is applied for heavy and long time application

Battery cover with auto lock spring for easy battery service and replacing, and clean the oil tank

Full opened engine hood

Easy opened counterweight cover is to protect the internal controllers to avoid water and dust

Protective roof

