

HELI
LIFTING THE FUTURE

CBD20-410

2.0 Ton Electric Pallet Truck

Advantages

- Mechanical Steering-Economic, comfortable, more reliable.
- AC Driving System-Low noise, quiet, without carbon brush and free maintenance.
- Electric Lifting-Rapid, efficient, electricity limit switch is Standard.
- Excellent Design-Easily in and out of the double tray.
- Energy conservation-Save energy, more environmentally friendly.
- AC Controller-Stepless, strong power, multiple automatic protection.



Economical

AC | Electronic limiter

Fork suitable for reversible pallet

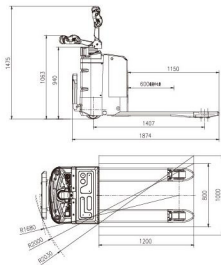
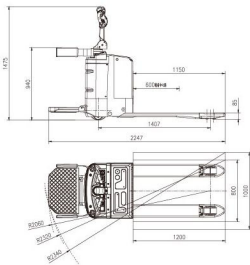


TOP1 FORKLIFT MANUFACTURER AND SALER
IN CHINA FOR CONSECUTIVE 25 YEARS

HELI CBD20-410

Feature		
Model		CBD20
Configuration No.		410
Loading capacity	kg	2000
Load center	mm	600
Wheel base	mm	1407
Operating type		Pedestrian / Ride On
Wheels		
Wheels type		PU
Wheel quantity Driving wheel/Balance wheel/Bearing wheel		1/1/4
Driving wheel size	mm	∅ 248×75
Bearing wheel size	mm	∅ 84×80(Double wheels)
Balance wheel size	mm	∅ 115×55
Dimension		
Min.fork lowered height	mm	85
Max.fork lifting height	mm	195
Max.lifting height	mm	110
Overall fork width	mm	550/600/650/685
Inside width between forks	mm	210/260/310/345
Fork length	mm	1150/1200
Fork width	mm	170
Fork thickness	mm	75
Overall length	mm	1874/2247
Overall width	mm	725
Overall height(With handle)	mm	1475
Overall height(Without handle)	mm	940
Min.turning radius	mm	1680/2060
Min.Aisle width for pallets 800×1200	mm	2000/2320
Min.Aisle width for pallets 1000×1200	mm	2030/2340
Performance		
Travel speed,laden/unladen	km/h	5.5/6.0
Lift speed,laden/unladen	mm/s	30/35
Lowering speed,laden/unladen	mm/s	40/35
Gradeability,laden/unladen	%	5/7
Electrical configuration		
Drive motor	kW	AC 1.5
Lift motor	kW	DC 1.2
Steering motor	kW	-
Battery voltage / capacity	V/Ah	24/210
Brake		Electromagnetic/Regenerative
Controller		CURTIS
Weight		
Battery weight	kg	202
Service weight with battery	kg	660

* Details of specifications and equipment are based on information available at time of printing and may change without notice.



ANHUI HELI CO., LTD.

ADD: NO.668 Fangxing Street,Economical Development Zone,Hefei,P.R.China

TEL : (86 55 1)63639068,63639258,63639358,63662105,63639530

FAX : (86 551)63639966

WEBSITE : <http://www.helichina.net>

Email : hel@helichina.net

AUTHORIZED DEALER